

Emergency  
Nutrition Network

# A Annual Report

1 February 2007 – 31 January 2008

# Introduction

The ENN was set up in 1996 by an inter-agency group of humanitarian organisations to improve practice and strengthen institutional memory of humanitarian agencies involved in the emergency food and nutrition sector. The ENN's flagship publication, *Field Exchange*, was developed as the main means of achieving this. Over the past 11 years, the ENN has developed many complementary activities including production of Special Supplements on areas of 'cutting edge' programming, development of operational guidance and capacity building in Infant and Young Child Feeding in Emergencies, research initiatives, facilitating workshops and producing reports on international technical meetings.

The ENN is a participatory-based initiative, with networking and collaboration at the core of activities. The ENN targets those concerned with humanitarian response at all levels, from international policy-makers to those responding 'on the ground' in emergencies.

## The ENN's Vision

That every individual caught up in a nutritional emergency anywhere in the world gets the most effective help possible.

## The ENN's Objective

To improve effectiveness of emergency food and nutrition interventions through identification and dissemination of lessons learnt in the course of operational practice and through research and evaluation.

## The ENN's Mission

There are three cross-cutting themes to all of ENN's activities:

- *Building up capacity* – at all levels, from international non-governmental organisations (INGOs) to local community organisations, and, from policy-makers to field workers, to respond more effectively to crises. This involves developing a shared institutional memory of what does and does not work in different crisis situations and delivering that knowledge as widely as possible.
- *Network-building* – so that organisations and individuals support and learn from each other as much as possible. The overarching purpose of ENN is to speed up the sharing of knowledge and wherever possible, reduce the communication chain.
- *Impartiality and independence* – to encourage reporting on failures as well as successes, the independence of the ENN is vital.

Protecting this includes ensuring that no one source of income predominates.

## Institutional base

The ENN was initially established as a self-financing activity in the Department of Community Health and General Practice in Trinity College Dublin, Ireland and later incorporated as a limited company in Ireland (30th April 2001). In September 2003, a transfer of ENN activities to Oxford, UK was initiated and completed in July 2004. Initially operating as a UK company limited by guarantee (not-for-profit), the ENN was granted UK charitable status in July 2006. The ENN is governed by a Board of Trustees.

## The ENNs Activities

- The ENN's tri-annual print/online publication, *Field Exchange*, records field level programming experience and disseminates this worldwide, to those working in the emergency nutrition and food security sectors. Producing *Field Exchange* offers an unique perspective of emergency programming that continues to help identify 'gaps' and challenges in the field and informs the development of the ENN's other activities.
- ENN 'Special Supplements' collate recent experience of best practice in specific 'cutting edge' areas of emergency programming. Three ENN Special Supplements have been produced to date.
- Coordination and technical input in the area of infant and young child feeding in emergencies (IFE) and research initiatives on moderate malnutrition are geared towards filling gaps in knowledge and developing capacity to make a positive difference to programming implementation.
- Facilitating and reporting on international technical meetings is a means of achieving speedier consensus on best practice and disseminating findings to those in the field and/or responsible for programming at headquarters level.

# Output



## Field Exchange

During the reporting year, issues 30, 31 and 32 of *Field Exchange* were produced. Staff from 21 INGO/NGOs, including two local/community based organisations, the ENN, five UN agency and eight research groups or individual researchers, wrote articles or submitted research for *Field Exchange*.

A breakdown of the type of article included in *Field Exchange* is given in Figure 1. Field articles covered a wide range of topics from piloting cash and food transfers in Sri Lanka (Issue 30) to management of moderate malnutrition using 'ready to use therapeutic foods' in Niger (issue 31) to wet nursing in the context of HIV in Bangladesh (Issue 32). Research summaries reflected innovation (e.g. field testing of sampling methods to assess prevalence of acute malnutrition in Issue 30), recurring challenges (e.g. pellagra outbreak in Angola, Issue 31) and technical developments (e.g. new WHO growth reference for children and adolescents, Issue 32). Save the Children USA, Muslim Aid and the emergencies department of the World Health Organisation featured in agency profile slots.

As of January 2008, there are 1944 recipients of *Field Exchange* receiving 2815 print copies in 112 countries (see Figure 2) in a variety of disciplines (Figure 3). *Field Exchange* articles are a valuable source of cases study material for training humanitarian staff – 256 training and academic institutions regularly receive *Field Exchange*.

*Field Exchange* and other ENN publications and related materials are available online at <http://www.enonline.net>. To improve accessibility to the experiences collated over the past 11 years through *Field Exchange*, in early 2008, ENN secured funding from the UNICEF-led Nutrition Cluster to catalogue the *Field Exchange* archive and develop an online searchable database. Supported by a CD resource and a print catalogue, this should be available from the end of 2008.



## Infant and Young Child Feeding in Emergencies (IFE)

ENN is an active member in a collaborative interagency effort (the IFE Core Group) concerned with developing policy guidance and capacity building in IFE since 1999. Work in policy guidance is reflected in the Operational Guidance in IFE, and in capacity building in two training modules (Modules 1 and 2 on IFE). Since 2004, ENN has been the coordinating agency and the institutional 'home' for the work of the IFE Core Group. The IFE Core Group currently comprises United Nations High Commissioner for Refugees (UNHCR), World Food Programme (WFP), World Health Organisation (WHO), UNICEF, the International Baby Food Action Network – Geneva Infant Feeding Association (IBFAN-GIFA), Action Contre la Faim (ACF) and CARE USA. Associate members are Save the Children UK (SC UK) and the International Federation of the Red Cross and Red Crescent Societies (IFRC).

This year saw a considerable expansion in the scope of the work of the ENN/IFE Core Group on IFE. Funded by the Nutrition Cluster, the ENN undertook a wide range of activities, including translation of the Operational Guidance on IFE into nine languages, technical update of training materials on IFE (Module 2) and translation into French, and development of an online Resource Library on IFE.

Funded by the Nutrition Cluster and IBFAN-GIFA, a regional IFE workshop is being organised by the ENN and IFE Core Group members in collaboration with UNICEF New York, UNICEF regional and

## Evaluation of ENN and Field Exchange

During 2007/08, an evaluation of Field Exchange and the ENN was carried out amongst the Field Exchange readership. A questionnaire was included in issues 30 and 31 of Field Exchange (April and September 2007) and on the ENN website. Overall, 98 questionnaires were returned between April 2007 and January 2008 (4% of the Field Exchange print readership). More than half of the questionnaires (61%) were completed online and 39% were returned by post. The majority of respondents (80%) answered the questionnaire as an individual and 15 answered on behalf of an agency. Over 60% of respondents had been receiving Field Exchange for 2 or more years, and a quarter of respondents were past or present contributors to the publication.

The vast majority of respondents (97%) used Field Exchange for "personal learning/updating knowledge", citing specific examples. One third (35%) of respondents had used Field Exchange to guide programming or policy development and 35% of respondents had used Field Exchange in training. Most (93%) had recommended Field Exchange to others.

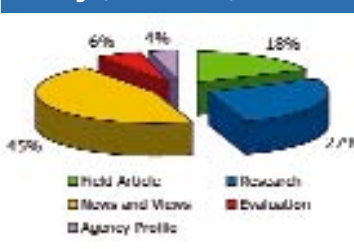
Seventy per cent of respondents accessed only the print version of Field Exchange and 8% accessed the online version only. The majority (85%) of respondents preferred the print version of Field Exchange. Reasons for preferring a printed copy were: easy to carry/transport around, lack of computer/internet connection, easier on the eye, can be annotated, or easier to refer to and share with others. Given the choice of alternative formats, 10% of respondents would opt for a pdf version, 4% for online view, and 8% would like a CD compilation (more than one option could be chosen).

Asked for suggestions to improve Field Exchange, 28% of people gave specific suggestions on the content, and 14% would like to receive Field Exchange more frequently (suggesting from quarterly to monthly). The majority of respondents were aware of at least

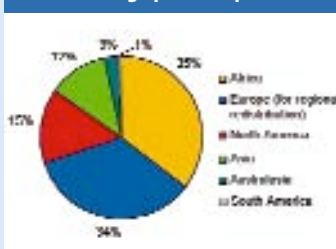
one of the ENN's other activities and 67% of respondents reported benefiting from one of these in their work. The majority of respondents supported ENN seeking funding from bilateral donors (75%), UN/ NGO contributions (84%), and selected private donors (74%). One third (33%) supported seeking funding from personal subscriptions.

The full evaluation report is available on the ENN website at: <http://www.ennonline.net/pool/files/reports/FEX%20Eval%20Report08.pdf>

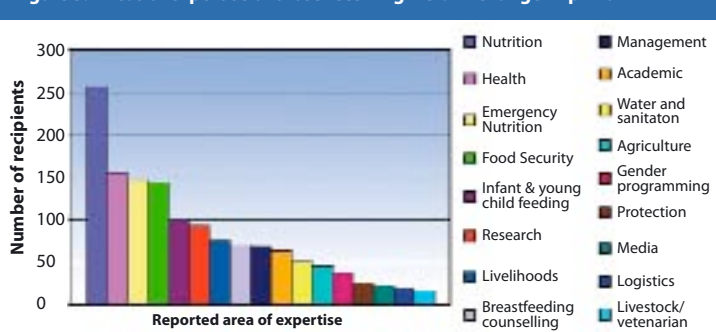
**Figure 1: Article types for Field Exchange (issues 30 – 32)**



**Figure 2: Geographic coverage of Field Exchange print recipients**



**Figure 3: Areas of expertise of those receiving Field Exchange in print**



country offices and the Ministry of Health, Indonesia. Scheduled for March 2008, the aim of the workshop is to improve emergency preparedness and response on IFE in the East Asia and Pacific regions.

In early 2008, ENN secured funding from the Nutrition Cluster to undertake two further projects on IFE. The first project involves the extensive revision, development and piloting of an orientation package for emergency relief staff on IFE, and the development of a training to integrate infant and young child feeding support into community-based management of acute malnutrition. Collaborators on this project include IFE Core Group members and international experts in the field. The second project involves a retrospective review of the current field management of moderately and severely malnourished infants less than six months of age – a long-standing gap area highlighted by the ENN over the years. Entitled the MAMI (Management of Acute Malnutrition in Infants) Project, it is being implemented in a collaboration between the ENN, the Centre for International Health and Development, University College London (UK) and Action Contre la Faim (France). For more details, visit [www.ennonline.net/research](http://www.ennonline.net/research)

The IFE Core Group's work is maintained online by the ENN at [www.ennonline.net/ife](http://www.ennonline.net/ife)

## Research

In collaboration with SC UK, the ENN undertook research to investigate the effectiveness of Supplementary Feeding Programmes (SFPs) in emergencies in 2006/07. This research highlighted gaps in the

reporting and evidence base for implementation of SFPs. In 2007, the findings were presented at international meetings and to bilateral donor agencies. As a result of these findings, in 2007/08 the Office of U.S. Foreign Disaster Assistance (OFDA) provided funding for the ENN to develop a set of research and development proposals working closely with a steering group of experts and agency nutrition staff. These proposals covered four main themes; i) development of minimum reporting standards for emergency supplementary feeding programmes, ii) research into programme defaulting, iii) development of a generic protocol to test new specialised foods for addressing moderate malnutrition, iv) research into the cost-effectiveness of different programme modalities for addressing moderate malnutrition. These proposals were drafted during 2007/08 and sent out for review. Plans for 2008 are to finalise the proposals and pursue funding.

## Project Funding and Sustainability

The ENN has been successful in developing a broad base of funders, which is considered key to sustainability and preventing over reliance on one funder. Historically, ENN funding has been sourced from a range of bilateral donors, UN agencies and NGOs. 'Recurrent' funding from UN agencies/NGOs provides about one third of the minimum operational needs to cover ENNs core activities and is the cornerstone of the ENN's funding base. The overall funding strategy is to further broaden the funding base to include as many agencies involved in nutrition in emergencies as possible. Given the importance of protecting our independence, in 2007, a position paper on private funding was developed by the Board of Trustees and is available at [www.ennonline.net](http://www.ennonline.net).



## Staff

In 2007, funding was provided to support ENN activities and Field Exchange by 27 UN agencies and non-governmental organisations (NGOs), USAID/OFDA and Canadian International Development Association (CIDA). Specific IFE projects were supported by UNICEF, IBFAN-GIFA, Terre des hommes and UNHCR. SFP research activities were supported by SC UK and USAID/OFDA.

### Accounts

Since its inception, the ENN has undergone external annual audit of accounts. A copy of ENNs audited accounts report and financial statements for 2007/08 are available on request.

ENNs accounts are prepared on an accrual basis. The ENN is not in any financial deficit. The organisation only undertakes expenditures for which there are committed funds. The ENNs annual general meeting was held on 23 August 2007.

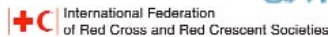
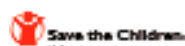
### Income & Expenditure Statement

For the Year 1 Feb 2007 to 31st January 2008

GBP

Income	186,934
UNICEF	88,206
USAID/OFDA	49,789
UNHCR	7,608
Canadian International Development Agency	6,366
CAFOD	4,900
Save the Children UK	4,515
World Vision Canada	3,618
World Food Programme	3,021
British Red Cross	2,500
OXFAM	2,400
Fondation Terre des hommes	2,354
Other Supporting Agencies	11,657
Expenditure	182,508
Wages and Salaries	75,198
Consultancy Fees	57,256
Postage, Stationery, Production and Distribution	20,480
Rent, Rates, Service charges and Utilities	6,547
Office equipment, Website and IT	3,491
Insurance	719
Telephone and Fax	471
Meetings and Events	9,244
Travel, Subsistence and Accommodation	7,705
Audit and Accountancy Fees	1,344
Bank Charges	53
Interest Received	2,276
Interest payable	141
Operating Surplus for the Year	6,561

### Supporting agencies in 2006/07:



There are six part-time staff employed at ENN:



**Jeremy Shoham** is Field Exchange Editor, SFP Research Coordinator and Director/Trustee, based in London.



**Marie McGrath** is Field Exchange Sub-editor, IFE Core Group Coordinator and Director/Trustee, based in Oxford.



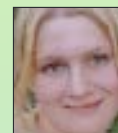
**Rupert Gill** is Project and Office Manger.



**Dan George** is ENNs Finance Assistant.



**Matt Todd** is ENN's Finance Manager.



**Sarah Foster** is the Mailing Administrator.

### External expertise is provided by:



**Orna O'Reilly** designs and produces all of ENNs publications.



**Phil Wilks** ([www.fruity solutions.com](http://www.fruity solutions.com)) manages ENN's website.

### Technical consultants working with ENN in 2007/08 include:

**Carlos Navarro Colorado** is the principal researcher on the ENN/SC UKs supplementary feeding research project and related initiatives.

**Ali Maclaine** is a nutritionist working with the ENN on IFE activities.

**Tom Baker** who worked on the IFE Resource Library and as a volunteer on the Field Exchange evaluation.

### Trustees

**Jeremy Shoham** and **Marie McGrath**.

**Bruce Laurence** is a Consultant in Public Health in Derbyshire, UK. Previously he was Medical Director of the UK-based NGO, Merlin, and has also worked with Oxfam and MSF.

**Nigel Milway** was a senior executive with British Telecom for over 14 years and is now director of his own own leadership and coaching consultancy.

**Victoria Lack** is a Lecturer in Public Health and Primary Care, at City University, London and spent years working in the field with ACF.

**Arabella Duffield** is an independent nutritionist with academic and field experience in nutrition and food security, and most recently was a SC UK nutrition advisor.

### Auditors

Wenn Townsend Chartered Accountants, 30 St Giles, Oxford, OX1 3LE, UK

Tel: +44 (0)1865 559900 Fax: +44(0)1865 310019

### Emergency Nutrition Network

32, Leopold Street, Oxford, OX4 1TW, UK

Tel: +44 (0)1865 324996

Fax: +44(0)1865 324997

Email: [office@ennonline.net](mailto:office@ennonline.net) [ife@ennonline.net](mailto:ife@ennonline.net)

[www.ennonline.net](http://www.ennonline.net)

The Emergency Nutrition Network is a company limited by guarantee and not having a share capital.

Registered address: 32, Leopold Street, Oxford, OX4 1TW, UK

Registered company no. 4889844

Registered charity no. 1115156

### Cover photos from top:

CTC programme. Valid International, Ethiopia; Mother and Child Nutrition (MCN) Clinic, Mullaitivu, Sri Lanka. WFP/Helen Kudrich, 2005; Measuring height in Ethiopia. Ethiopia, MSF, 2006; Women displaced by floods, Chupanga camp, Sofala Province. UNICEF/HQ07-0113/Thierry Delvigne Jean, Mozambique; A mother feeding her baby using the SST, ACF. Afghanistan, 2004; Learning how to make F75 and F100. C Angood, Tanzania, 2007.

### Background:

Seed multipliers in the Berta Development Centre district of Bora, Ethiopia, D Stephenson/Self Help Development Intl, 2006.